





OUR VISION.

NEMO® IS FOUNDED ON
A COMMITMENT TO ADVENTURE, TO THE FEARLESS
PURSUIT OF UNCHARTED PATHS, IN EVERYTHING—
FROM THE EQUIPMENT WE BUILD
TO THE WAY WE RUN OUR BUSINESS.
BRAVELY EXPLORING OPENS OUR MINDS, BRINGS US CLOSER TO
NEW DIRECTIONS THE PEOPLE WE DEPEND ON, SHARPENS
ADVENTURE GIVES US PURPOSE AND
PERSPECTIVE. IT MAKES US
WE BELIEVE **MEANINGFUL ADVENTURES** HUMBLE AND PROUD.
ARE POSSIBLE FOR **ANYONE, ANYWHERE.**



POSSIBLE, THAT IS, IF YOU BRING
THE WILL, THE IMAGINATION,
AND THE RIGHT GEAR.

Adventure Anywhere™



EXTREME CONDITIONS
TECHNOLOGY



MIN WEIGHT

4 lbs, 6 oz
2.0 kg

PACKED SIZE

15 x 7 in dia
38 x 18 cm dia

FLOOR DIM

84 x 47 in
213 x 119cm

ALPINE WARRIOR

A long history of awards including Editor's Choice from Climbing, Best in Gear from Rock and Ice, and Editor's Choice from Backcountry magazine.

Innovative Condensation Curtain isolates frost resulting from your breathing overnight to a small portion of the tent interior.

NEMO STAT™ system allows you to transfer your anchor inside without compromising the weatherproofness of the tent or adding slack into the system.

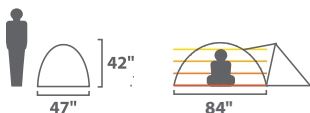
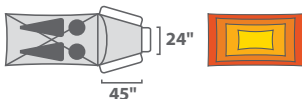
FOR DETAILED SETUP, CARE, AND REPAIR INSTRUCTIONS, VISIT:
www.nemoequipment.com/support



TENSHI™
2 PERSON



NEMO PRODUCT STATISTICS



Minimum Weight	4 lbs, 6 oz / 2.0 kg
Packed Weight	7 lbs, 3 oz / 3.3 kg
Packed Size	15 in x 7 in dia / 38 cm x 18 cm
Frame	2 DAC 8.84 mm Featherlite®
Shell Fabric	40D OSMO™ W/B (4,000)
Vestibule Fabric	30D PU Nylon (1,500)
Floor Fabric	70D PU Nylon (5,000)
Floor Dimensions	84 in x 47 in / 213 cm x 119 cm
Interior Height	42 in / 107 cm
Floor Area	28 sq ft / 2.6 sq m
Vestibule Area	11 sq ft / 1.0 sq m
Included Accessories	Roll-up style stuff sack, Tenshi™ Vestibule, Condensation Curtain™, stakes, guy-out cord, repair kit
Optional Accessories	Pawprint™

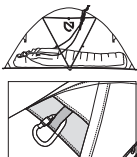


NEMO PRODUCT
INNOVATIONS



NEMO's Extreme Conditions Technology will keep you safe and comfortable when your adventures take you to the barely inhabitable, most desolate and remote regions of our planet. We've developed a long list of features and technologies, from snow skirts to specialized textiles, that are designed specifically to combat problems faced by alpinists and other winter adventurers.

TENSHI™ HIGHLIGHTS



Sleep Tight Anchor Transfer™ (STAT™) provides a waterproof, convenient, and direct method of transferring an anchor into the tent when pitched on narrow ledges or other high exposure areas.



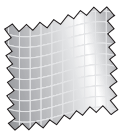
The Condensation Curtain™ helps keep moisture created by normal breathing contained in a small portion of the tent. The curtain has a tieback loop for easy stowage when not in use. Remove frost and condensation by detaching Velcro® tabs from tent and shaking off moisture.



Overhead vents, in addition to a rear window, allow for air circulation. Pressure Porting™ on the largest two overhead vents help reduce forces on the seams during high winds. Vents can be shut in extreme weather.



Modular configuration adds versatility. The vestibule has a full snowskirt and provides space for gear storage and a dry entry during bad weather. Pile snow or stack ropes over the snow skirt to help keep out the wind and snow. On sunny days, the vestibule is easily unzipped from the tent.



Sleep Tight Anchor Transfer™ (STAT™) provides a waterproof, convenient, and direct method of transferring an anchor into the tent when pitched on narrow ledges or other high exposure areas.

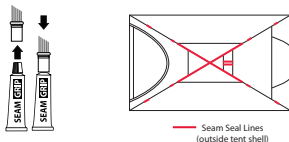
TENSHI™ ACCESSORIES



Pawprints™ are removable liners perfectly sized to button snap to the inside corners of your tent. They protect your tent floor from boots and paws, and add serious comfort. Pawprints™ are made of soft machine-washable brushed polyester. Place your sleeping pads between a Pawprint™ and floor to help them stay in place.

NOTE: TENT IS NOT FULLY WATERPROOF UNTIL IT IS SEAM SEALED.

In some areas of the tent, seams are sewn directly through the tent shell to create a very strong construction. Water can leak through these areas so it is necessary to cover the stitching with Seamgrip®. The Seamgrip® also adds strength so you may choose to apply it to all exterior seams. However, it is only necessary in the areas highlighted below.



To seam seal your tent, set up the tent and locate the areas highlighted above. These locations include pole wraps, the STAT™, and vent seams. Clean any dirt or moisture off the surface. Carefully squeeze the Seamgrip® through the applicator tip onto the stitching. Use only enough to completely cover the stitching. Be careful not to contaminate zippers and Velcro®. Allow at least 24 hours for curing before use. If the Seamgrip® remains tacky, you can lightly dust the fully cured Seamgrip® with talcum powder.

Outside Pole Wraps



(10 Total)

Sleep Tight Anchor Transfer™



(STAT™)

Vent and Door Seams



(2 Total)





NEMO QUALITY
GUARANTEE



NEMO guarantees every product we sell. We put great effort into choosing the best materials and providing you with the highest level of workmanship. We obsess over every design decision to ensure you get the greatest comfort and protection possible. Our process begins with pencil and paper and evolves methodically through computer modeling, prototyping, testing, and development. We strive to design and build the best outdoor equipment on the planet.

NEMO products carry a lifetime warranty against defects in workmanship and materials to original owner, with proof of purchase or warranty registration. Warranted products will be replaced or repaired at NEMO's discretion. NEMO does not warranty products against normal wear and tear, unauthorized modifications or alterations, improper use, improper maintenance, misuse or neglect or if the product is used for a purpose for which it is not intended.

If you are having a problem with your NEMO product, please visit www.nemoequipment.com/support/warranty-returns/ or call NEMO Customer Service at **1-800-997-9301**.

We will do our best to see that you are satisfied with your NEMO product. Our goal is to get you back to the outdoors as quickly as possible.

Register your NEMO product for warranty online and receive a code for 10% off at the NEMO webstore!

nemoequipment.com/tent-manufacturer-warranty

Except as expressly set forth in these terms and conditions, NEMO is not liable for any direct, indirect or consequential damages arising out of or resulting from the use of a NEMO product. The warranties set forth in these terms and conditions are in lieu of all other warranties, express or implied, including without limitation, implied warranties of merchantability or fitness for a particular purpose.



LET'S GET SOCIAL #adventureanywhere



nemoequipment



@NEMO_Equipment



NEMOEquipmentInc



@nemoequipment



WARNING

Never place your stove, campfire, or other flame source in or near your tent. Never cook, light, or refuel a stove or any other heat source inside your tent. Death by suffocation and/or serious burns is possible.

Maintain adequate ventilation inside your tent at all times. Death by suffocation is possible.

Anchor your tent properly at all times to reduce the risk of loss or injury to the tent or occupants.

Carefully consider the possibility of falling rocks or tree limbs, lightning strikes, flash floods, avalanches, strong winds, and other hazards when choosing a campsite to reduce the risk of loss or injury.

If you have additional questions, please contact
NEMO Equipment, Inc. at 800-997-9301.

NOTE: All 2015 NEMO tents meet the CPAI-84 standard
for flame retardancy.



www.nemoequipment.com

©2016 NEMO Equipment, Inc.